

# Rice Canyon Information and Map

**Thanks for your interest in joining us for our Trail to Bay Challenge hike at Rice Canyon!**

**Please see below for more information on the site location and details.**

**Program description:** Join us as we explore the Rice Canyon Trail! This trail showcases some of the amazing native wildlife found in Chula Vista. We will look at native plant adaptations, traces of animals, and the trailhead succulent garden!

**Meeting Location:** We will meet on the west side of parking lot at 1242 Cima Del Rey, Chula Vista, CA 91910. See attached map! Look for the large flag with the Trail to Bay Challenge logo!

**Driving directions:** From 805 South take the Bonita Road exit. Turn left onto Bonita Road and continue approximately 2.2 miles. Turn right onto Otay Lakes Road and continue approximately 1.3 miles. Turn right onto Avenida Del Rey, then turn left onto N Rancho Del Rey Parkway. In approximately .4 mile the entrance to Rice Canyon Open Space Preserve will be on the right.

**Suggested parking:** This park offers a dirt/gravel lot with limited spaces. This lot is located [at 1242 Cima Del Rey, Chula Vista, CA 91910](#)

**Restrooms and Water:** This location does not offer restrooms or water, so please plan accordingly. The closest restrooms would be in the park across the street.

**Program Time:** 9:00am – 11:00am

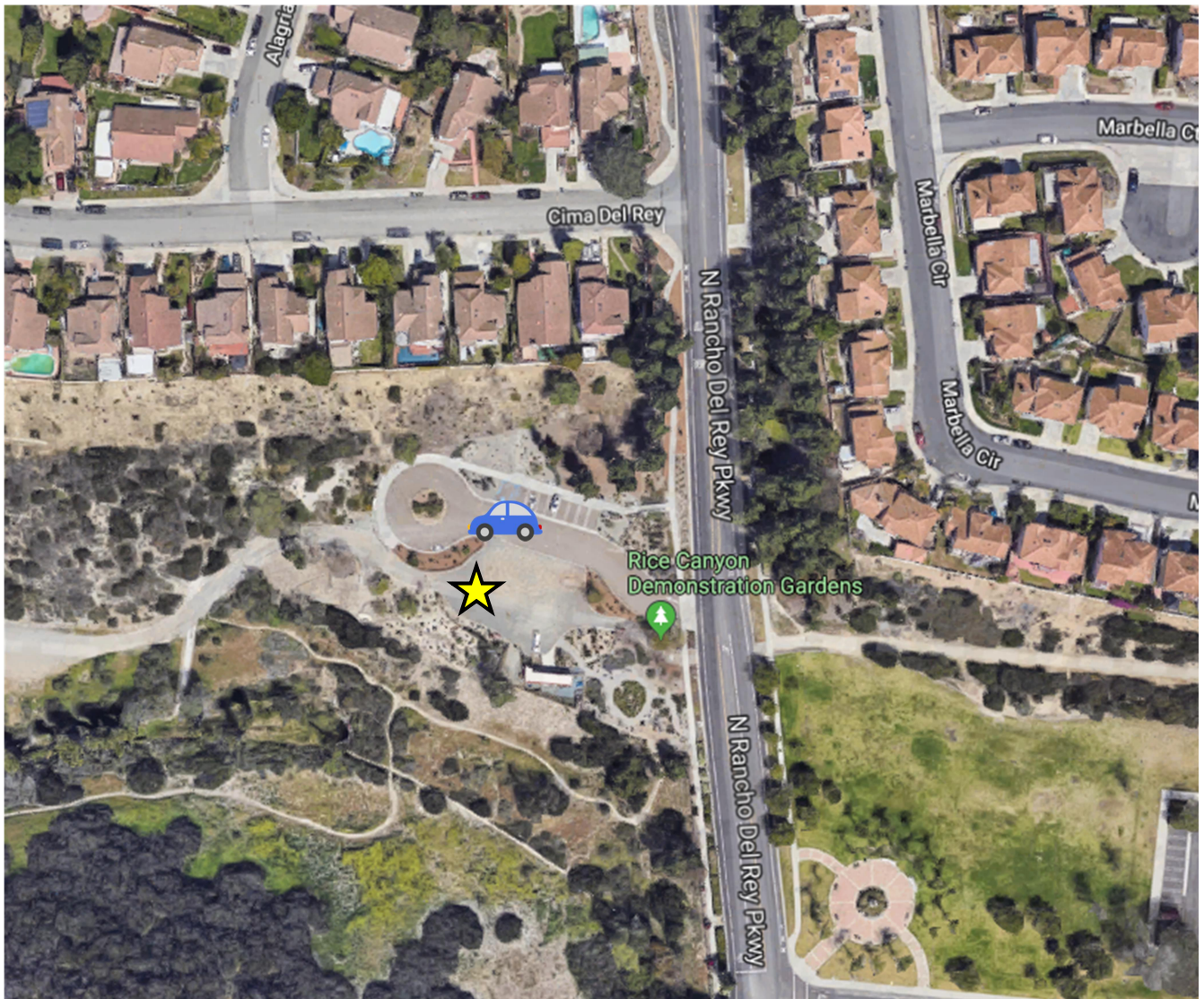
**Hike length:** 1 mile out and back along a straight trail

**Trail Difficulty Level:** This trail is listed as an easy hike. The trail consists of a wide, flat dirt path that is accessible for strollers and guests of all ages.

**Links for more information:**

- [Hike San Diego Website - Rice Canyon](#)

## Parking and Check-in Station Map



### Map Key



Parking



Meeting  
Location